



# Notre Dame's Journey to the Cloud

Mike Chapple, Senior Director for IT Service Delivery  
Sharif Nijim, Enterprise Application Architect  
January 28, 2015



@mchapple  
@snijim

# Agenda

- Notre Dame's Journey to the Cloud
- Case Studies
- Organizational Considerations
- Collegial Conversation

# What are we doing?

We will move **80%** of Notre Dame  
IT services into the cloud by <sup>Dec 31</sup> **2017**

Creating Notre Dame's  
IT future

# CLOUD FIRST

WE NEED WHAT THE CLOUD OFFERS



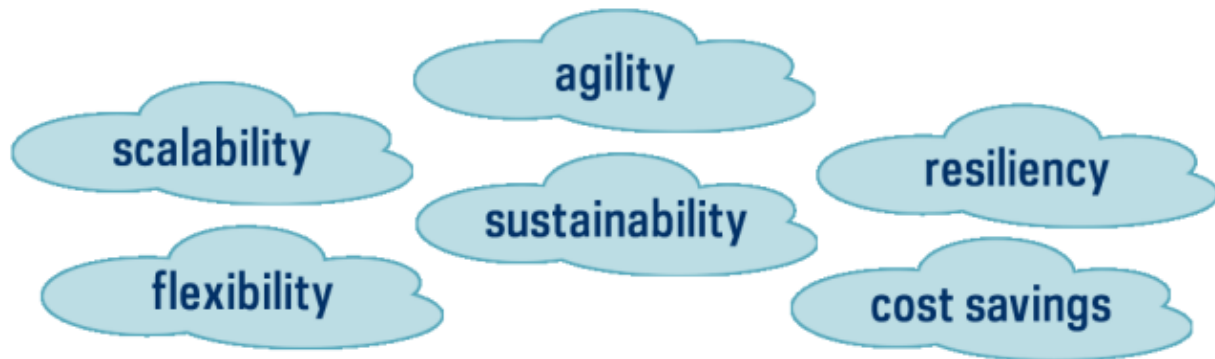
Demand for IT services will  
continue **INCREASING**



Funding and staffing  
remain **CONSTANT**



We must find **NEW WAYS TO EXCEL**  
in delivering IT services





Software as a Service (SaaS)

Platform as a Service (PaaS)

Infrastructure as  
a Service (IaaS)

On-  
Premises



MetricStream



# Why IaaS?



Pay only for  
the resources  
we use



Add or remove  
resources  
quickly



Avoid managing  
multiple physical  
data centers

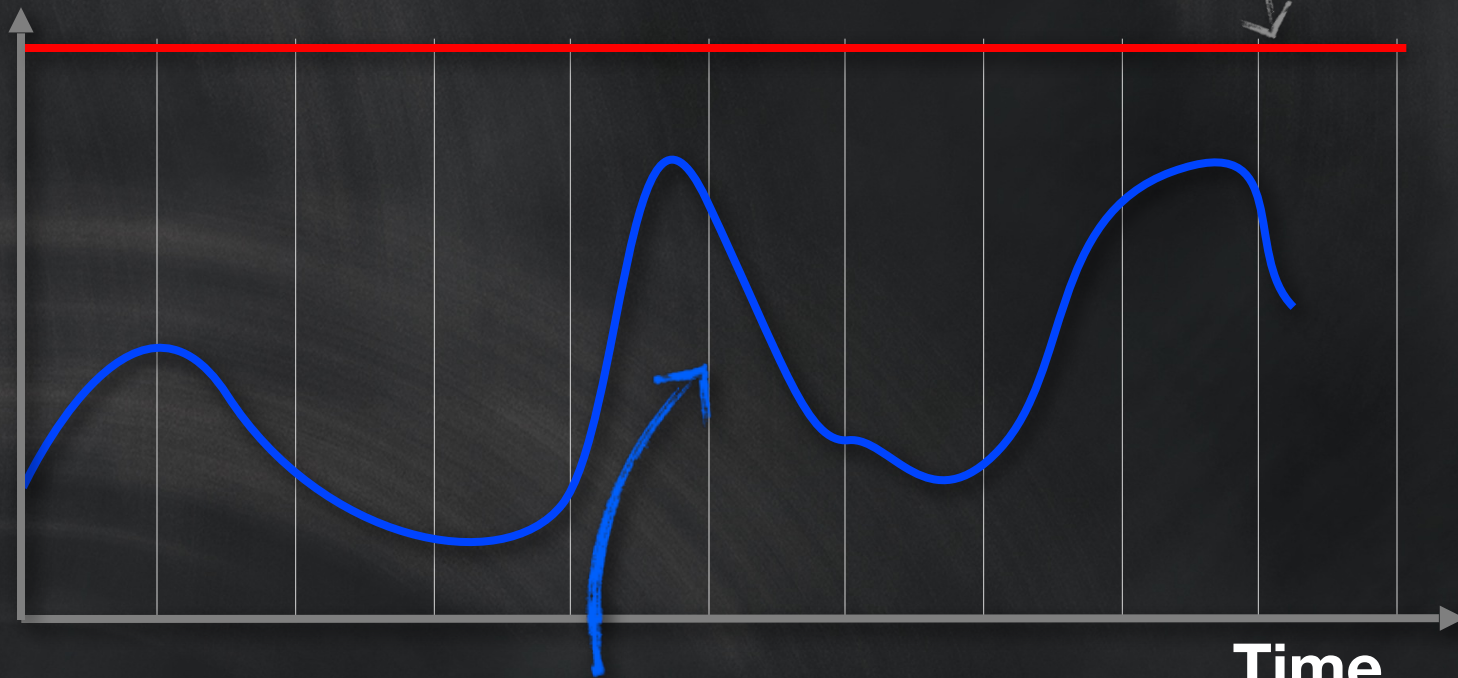


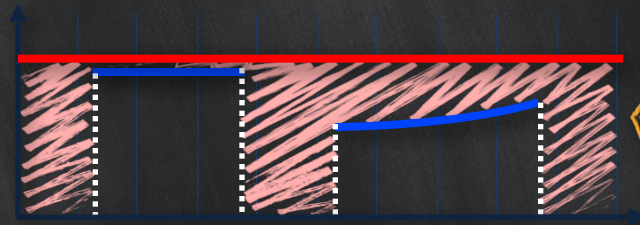
Capacity

Traditional IT

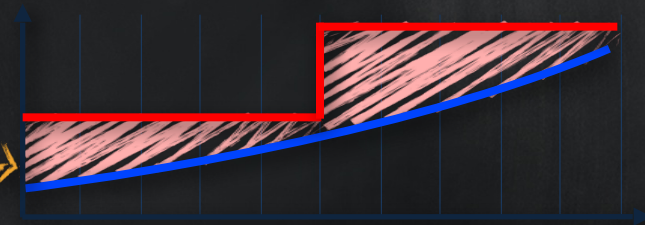
Your IT needs

Time





On and Off

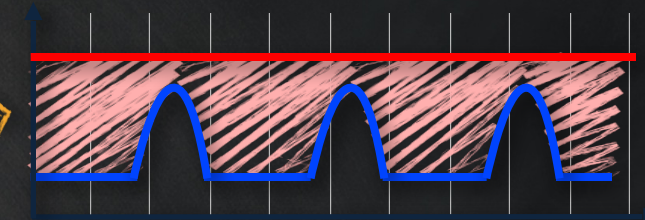


Fast Growth

WASTE

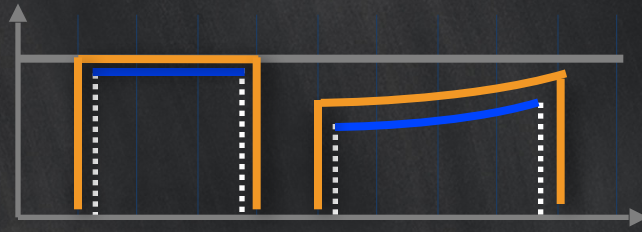


Variable peaks

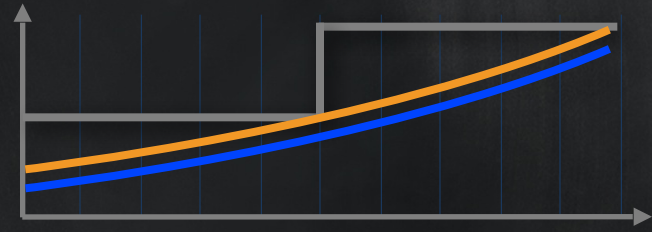


Predictable peaks

Frustrated Students, Faculty, and Staff

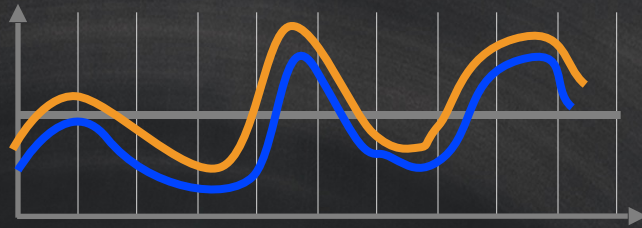


On and Off

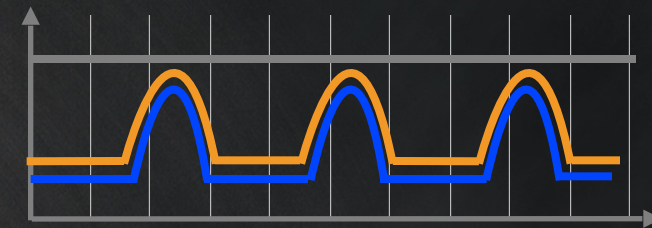


Fast Growth

## The IaaS Value Proposition



Variable peaks



Predictable peaks

# Why AWS?



Most advanced data centers in the world

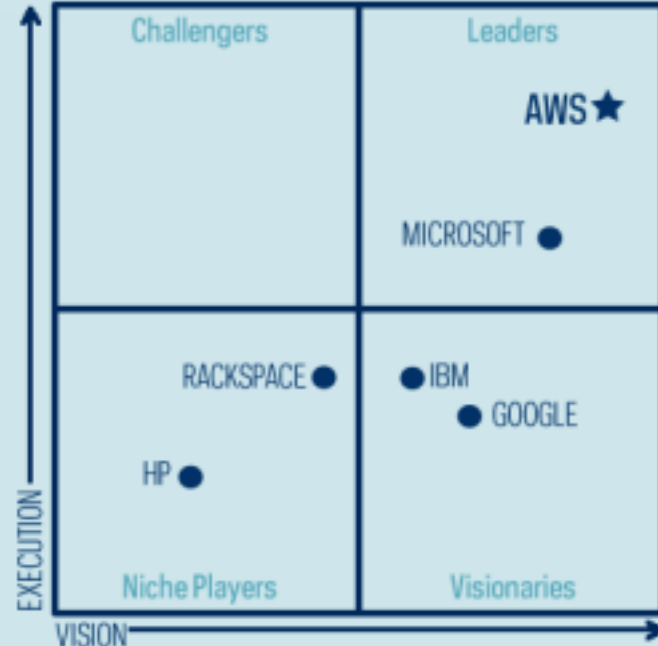


Proven pace of innovation



Relentless focus on customer success

GARTNER 2014



# How Did We Start?



# Fall 2012: Catalyst



UNIVERSITY OF  
NOTRE DAME

UNIVERSITY of NOTRE DAME

emergency.ND.edu

Search



Emergency Contacts

[ND Alert](#)

[Resources](#)

[Business Continuity](#)

Office of Campus Safety

Risk Management and Safety

ND Security Police

ND Fire Department

[Home](#) // [Emergency](#)

## Notre Dame Emergency Information

Emergency updates are available on [Facebook](#) and [@nd\\_news](#) on Twitter.

### Current Status

There is no emergency at the University of Notre Dame. The campus is operating under normal conditions.

In the event of an emergency, this site will be updated with information about the nature of the incident, how to remain safe and, after the event, the point at which safety has been restored.

### Reporting an emergency

- Dial 911 from any phone; or
- Pick up the receiver of any blue-light phone on campus

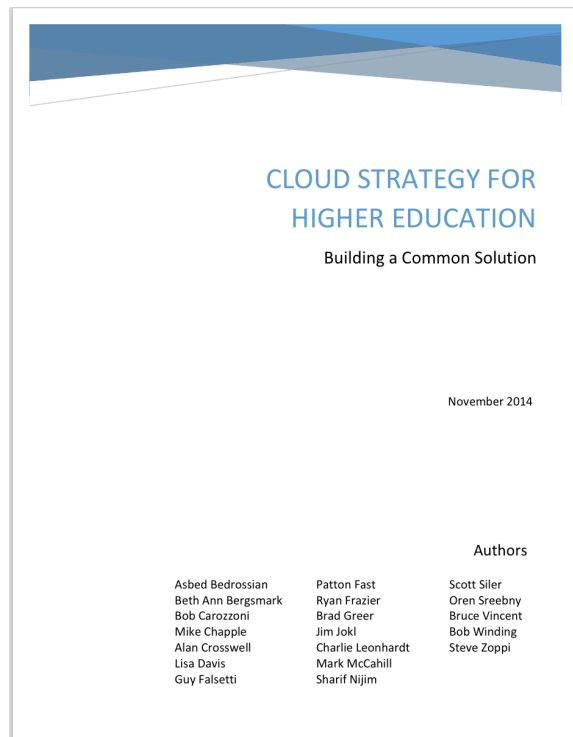
# Introduction to AWS

- Connected with Amazon Web Services
- Met in Michigan
- Built/configured CRM demo environment during the initial meeting
- ND staff impressed with AWS toolset

# Common Strategy



UNIVERSITY OF  
NOTRE DAME



**EDUCAUSE CENTER FOR  
ANALYSIS AND RESEARCH**

[http://www.educause.edu/library/resources/  
cloud-strategy-higher-education-building-  
common-solution](http://www.educause.edu/library/resources/cloud-strategy-higher-education-building-common-solution)



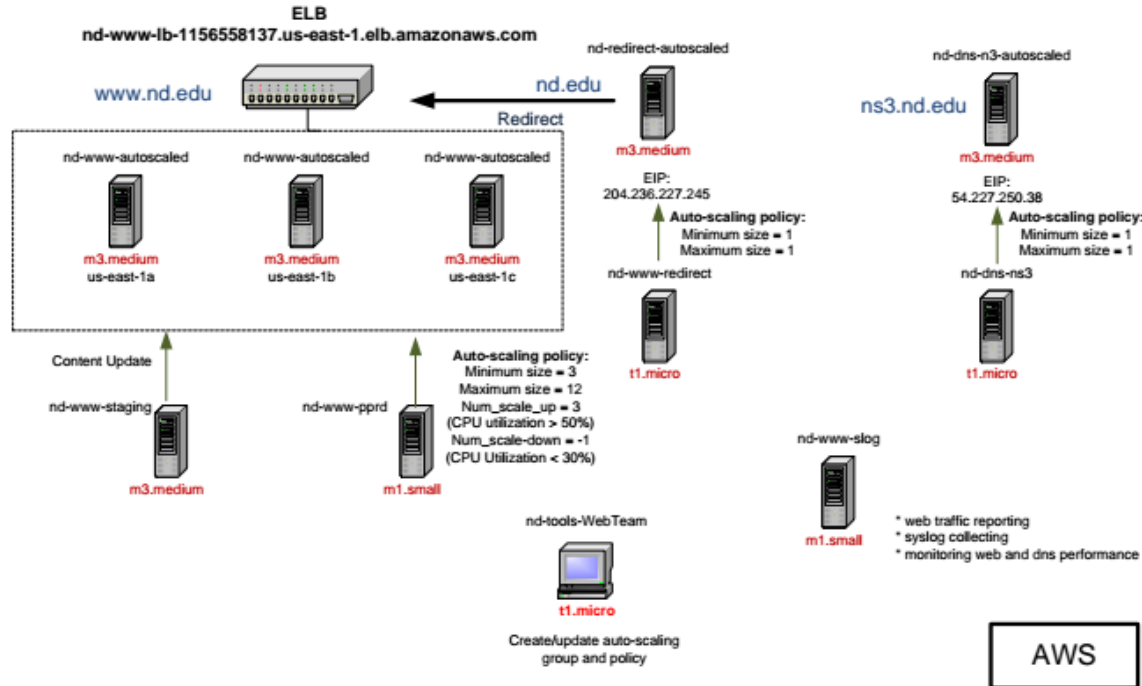
# Case Studies

## Case Study: moving [www.nd.edu](http://www.nd.edu) to AWS

- Initial move/test took three days (10/2012)
- Performance/scalability test results exceeded expectations
- Reduced complexity/cost
- Site went live 1/2013

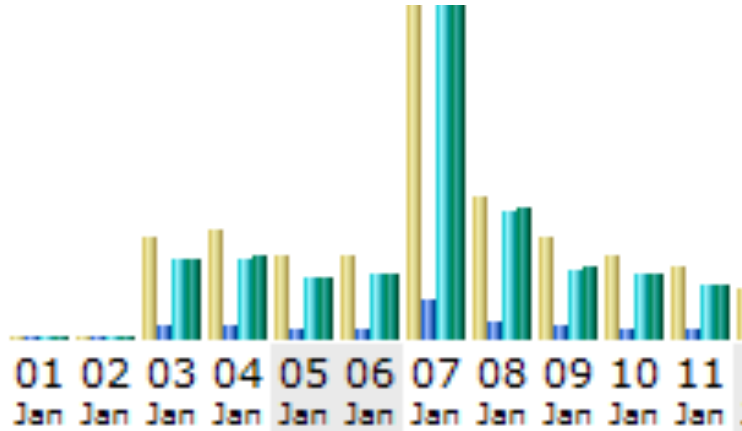


# What did it take?



# Success!

- Normal and emergency operation simplified
- Autoscaling handled BCS Championship
- To Do: CloudFront, better performance, lower cost



Day	Number of visits	Pages	Hits	Bandwidth
01 Jan 2013	456	2,854	31,614	923.76 MB
02 Jan 2013	406	2,735	29,648	789.09 MB
03 Jan 2013	45,690	328,049	1,868,453	44.10 GB
04 Jan 2013	49,685	335,960	1,853,714	45.84 GB
05 Jan 2013	38,205	222,781	1,432,841	33.43 GB
06 Jan 2013	37,459	233,688	1,505,032	35.96 GB
07 Jan 2013	150,848	936,571	7,729,762	181.90 GB
08 Jan 2013	63,970	408,588	2,960,622	71.42 GB
09 Jan 2013	45,940	276,955	1,615,684	38.56 GB
10 Jan 2013	37,524	247,983	1,475,446	35.43 GB

# Lessons learned

- Apex node nd.edu must be DNS A-Record
- Local URL path dependencies need to be fixed
- Sites coupled with campus needed to be relocated
- Support for multi-AZ
- CloudFront will require us to make design changes

# Case Study: conductor.nd.edu

- Conductor: ND-developed content management system
- 435+ web sites
- 4+ million views/month
- Hosted in RackSpace - plagued by unstable hardware issues

# Approach

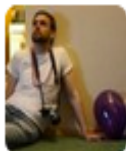
- Employ Elasticache
- Switched from MySQL server to RDS
- Began process to enable scaling
- Externalize data in EBS ... then ... S3
- Use sub-account to simplify sysadmin permissions and billing



# Success!



UNIVERSITY OF  
NOTRE DAME



**Alec Hipshear** @xionon · Mar 25

Conductor is so much faster i'm actually afraid it's broken and nobody noticed

[dropbox.com/s/h4v4a2ctqpzk...](https://dropbox.com/s/h4v4a2ctqpzk...)

/cc @snijim @BrandonRich #DevOpsND



View photo



Reply



Retweeted

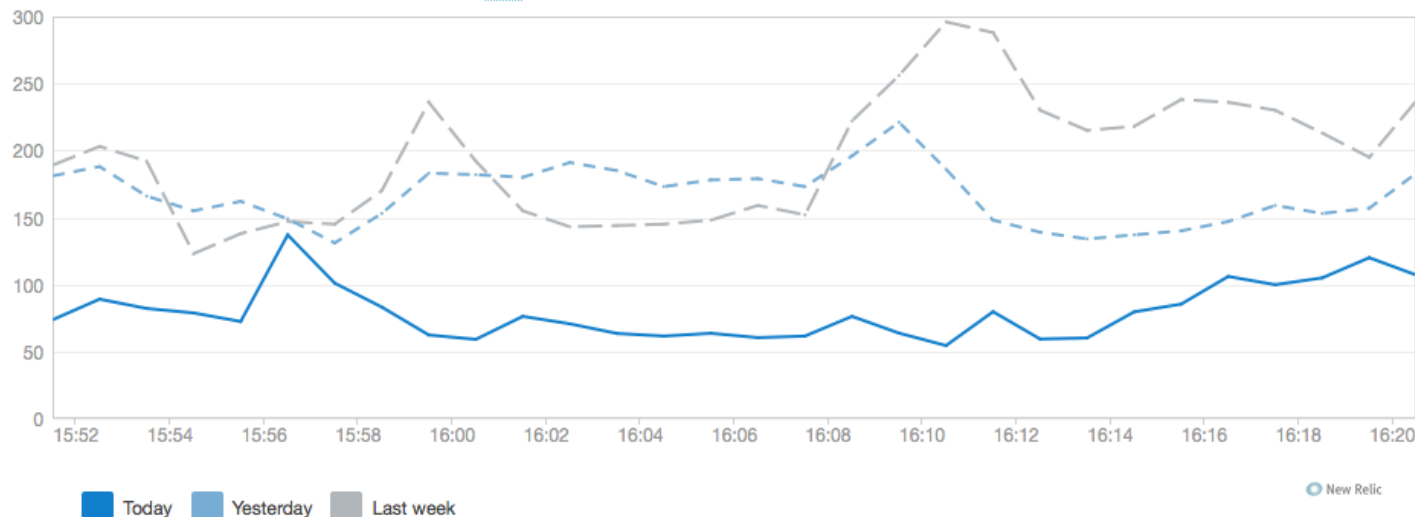


Favorited



# Success!

App server historical average response time (ms)



It may be faster, but now its half the cost😊

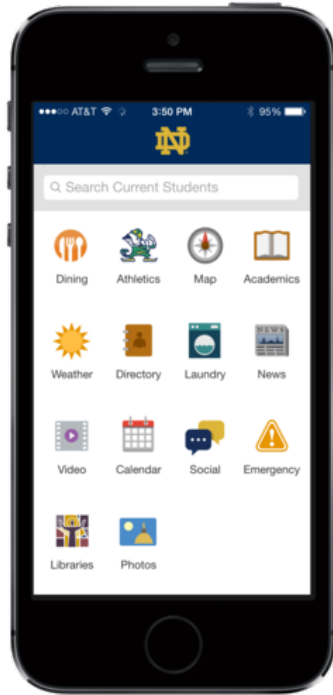
# Case Study: Server Backups

- Netbackup to manage 300 TB of backups
- Chose Panzura as cloud storage gateway partner
- Backing up to S3
- Any server restore since summer 2014 being retrieved through Panzura device
- Able to avoid augmenting/replacing NetApp on premises footprint



UNIVERSITY OF  
NOTRE DAME

# Other ND/AWS Successes




Shibboleth®



InCommon®



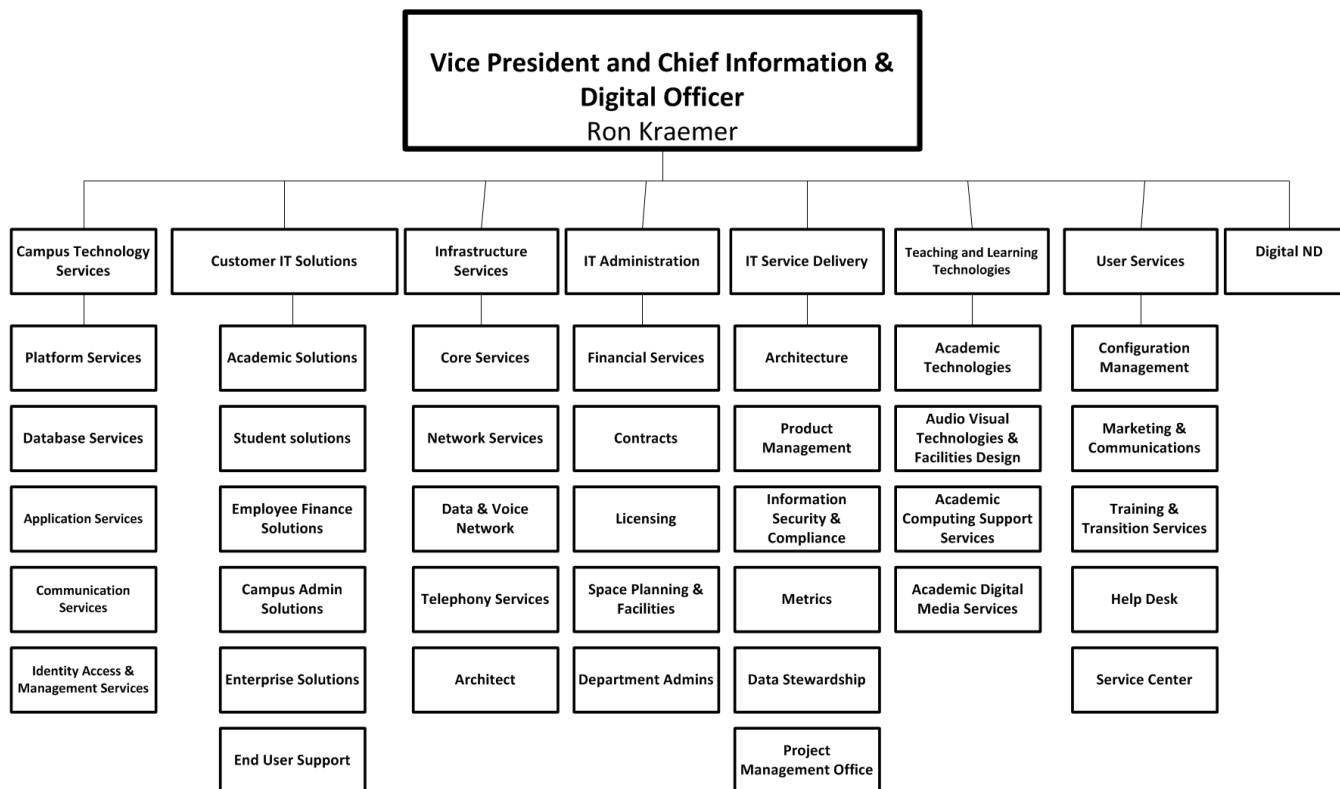
# ND Authentication in AWS

- High availability for off-campus students, faculty, and staff
- Auto failover with Route 53 
- Client Gateway VPN for Domain Controller sync

# Dedicated Team...

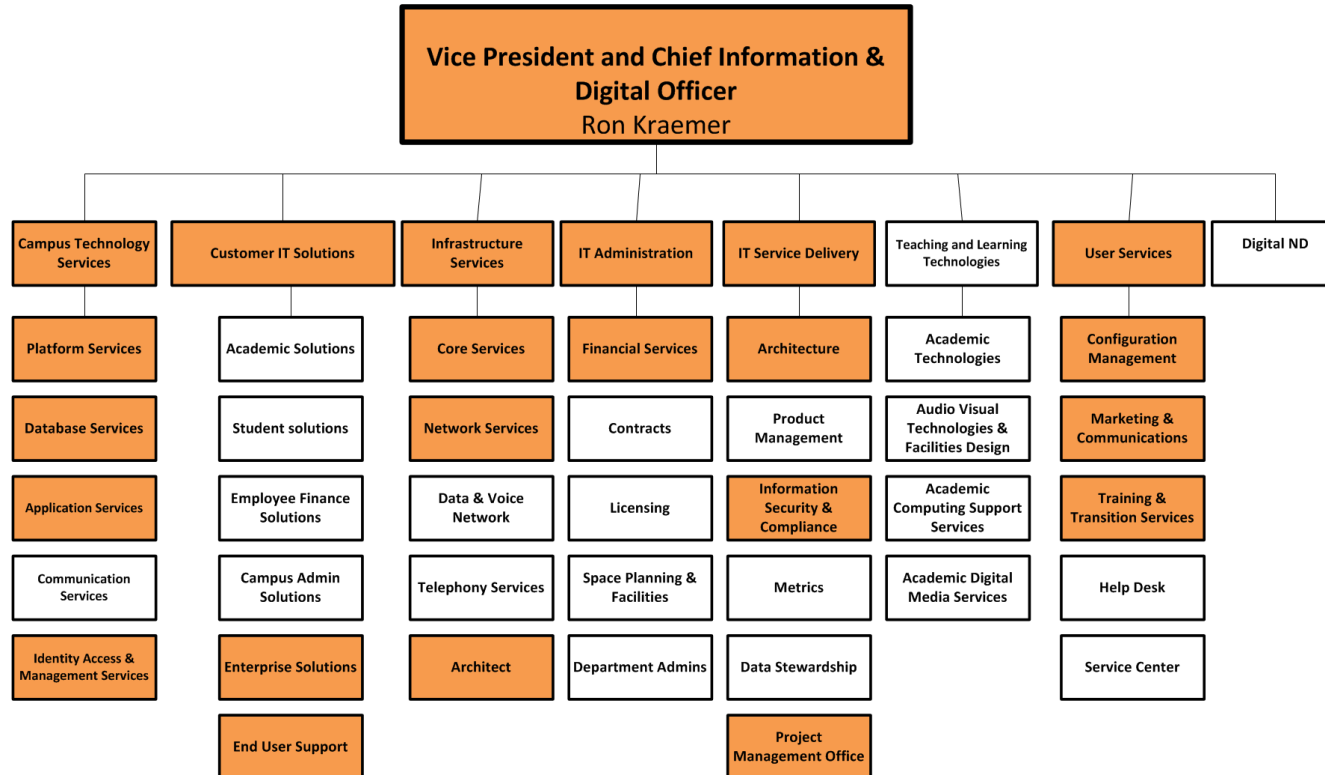


UNIVERSITY OF  
NOTRE DAME



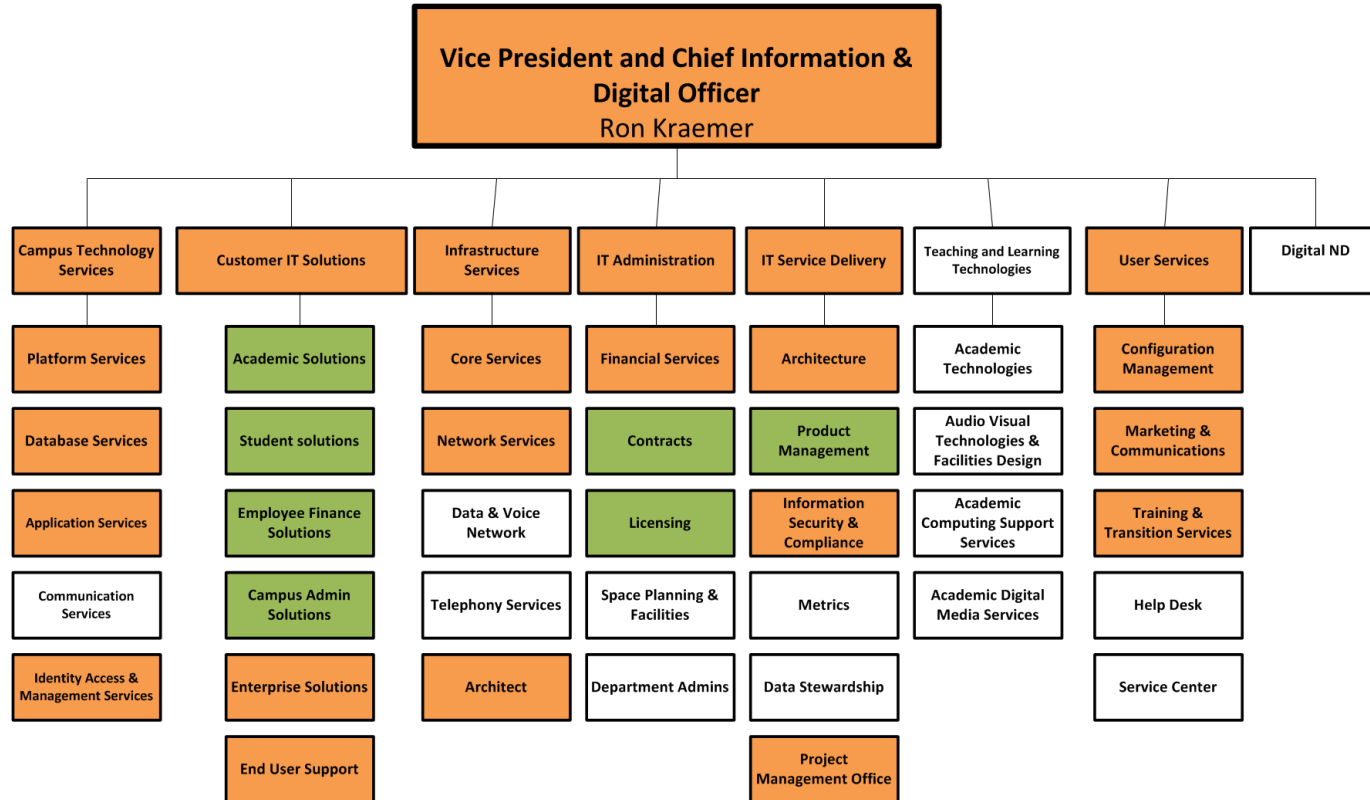


...from across the organization...

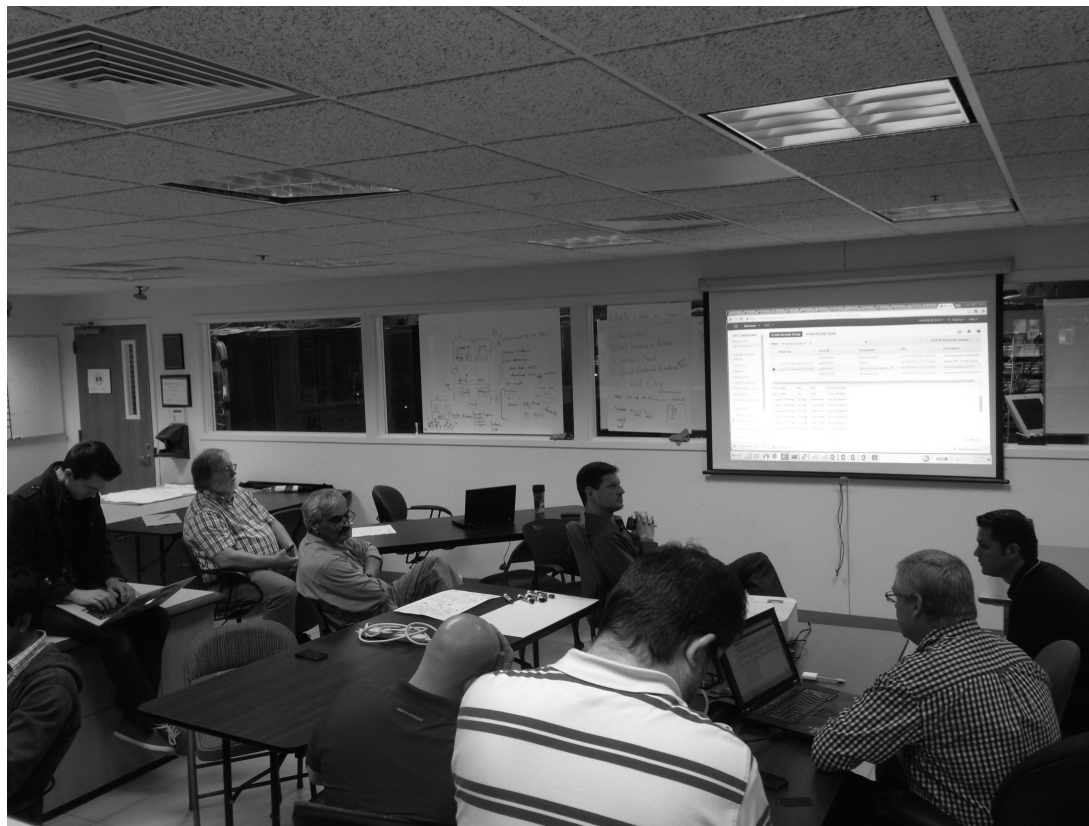




...expanding as necessary



# Dedicated space...





...evolved to be habitable



Shared Mission: #NDCloudFirst

80% of IT service  
portfolio to be cloud  
based in 3 years

# Join the conversation

- Twitter: #NDCloudFirst
- Web: <http://oit.nd.edu/cloud-first/>
- Blog: <https://blogs.nd.edu/devops/>

# Amazon Template

12/3/2014  
(v5-ejs)

## Table of subnets

172.22.64.0/19 CA  
 172.22.64.0/21 CA-World  
 172.22.64.0/23 CA-World-1b  
 172.22.66.0/23 CA-World-1c  
 172.22.68.0/23 CA-World-1d  
 172.22.70.0/23 CA-World spare

172.22.72.0/21 CA-Campus  
 172.22.72.0/23 CA-Campus-1b  
 172.22.74.0/23 CA-Campus-1c  
 172.22.76.0/23 CA-Campus-1d  
 172.22.78.0/23 CA-Campus spare

172.22.80.0/21 CA-Private  
 172.22.80.0/23 CA-Private-1b  
 172.22.82.0/23 CA-Private-1c  
 172.22.84.0/23 CA-Private-1d  
 172.22.86.0/23 CA-Private spare  
 172.22.88.0/21 CA spare

172.22.32.0/20 SS  
 172.22.32.0/21 SS-Public  
 172.22.32.0/23 SS-Public-1c  
 172.22.34.0/23 SS-Public-1d  
 172.22.36.0/23 SS-Public-1b  
 172.22.38.0/23 SS-Public spare

172.22.40.0/21 SS-Private  
 172.22.40.0/23 SS-Private-1c  
 172.22.42.0/23 SS-Private-1d  
 172.22.44.0/23 SS-Private-1b  
 172.22.46.0/23 SS-Private spare

- us-east-1a
- us-east-1b
- us-east-1c
- us-east-1d

AZ Legend

