



# Cloud Adoption in Higher Education

## A Notre Dame Perspective

Sharif Nijim and Bob Winding, University of Notre Dame

November 14, 2014 | Las Vegas, Nevada

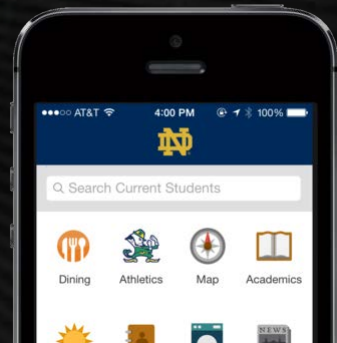


# The Journey



# Notre Dame's Journey Starts

- **2012: Start small, dream big**
  - Started working with AWS in 2012
  - Migrated [www.nd.edu](http://www.nd.edu) to AWS
- **2013-4: Experiment**
  - Migrated custom CMS
  - Server backups via a cloud storage gateway
  - ND Mobile App
  - Authentication



# Putting AAA in AWS

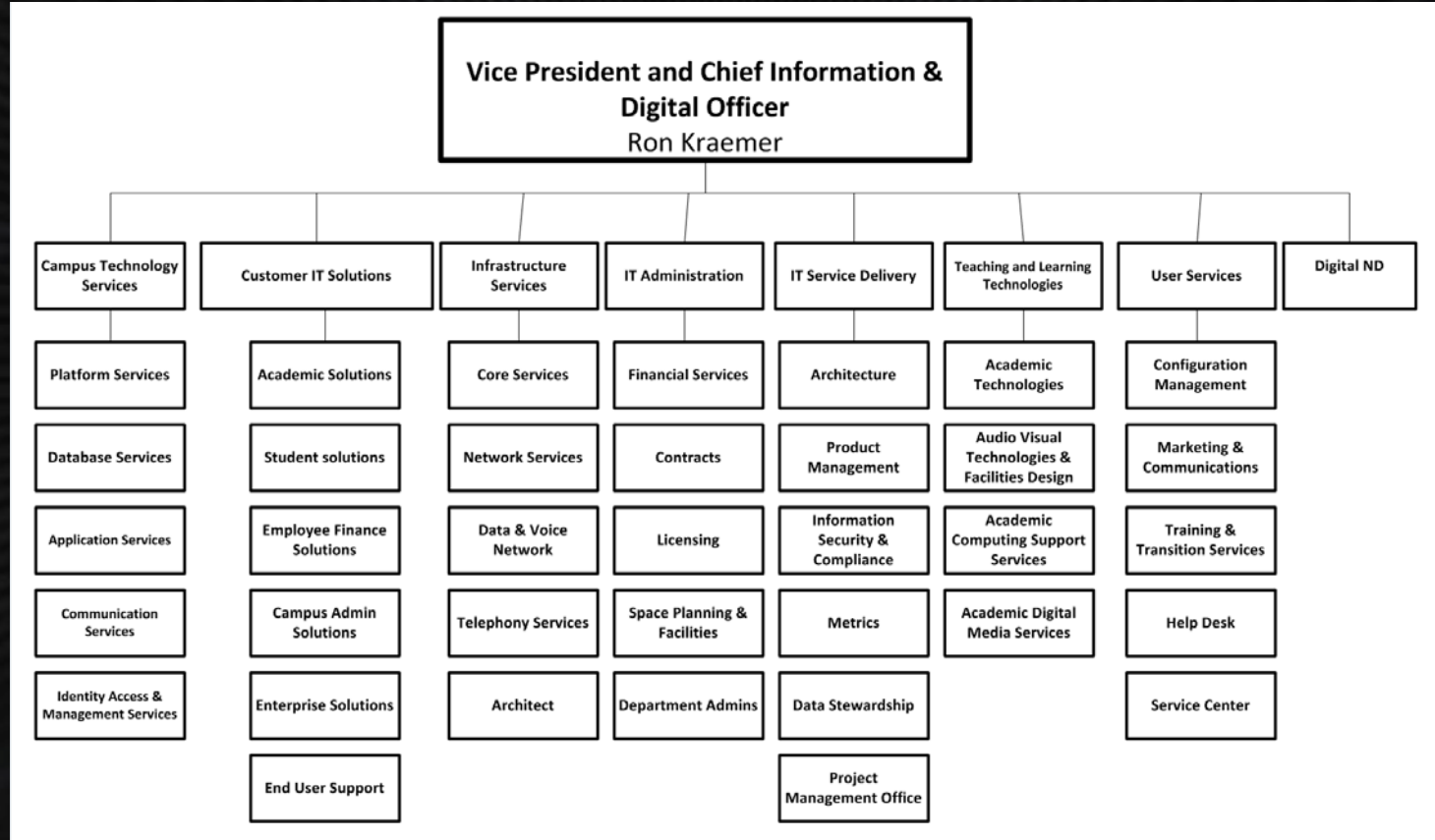
- High Availability for off campus users
- Auto failover with Route 53
- AWS based domain controller, 389 Directory, CAS and Shibboleth
- Client Gateway VPN for Domain Controller Sync
- PostgreSQL RDS



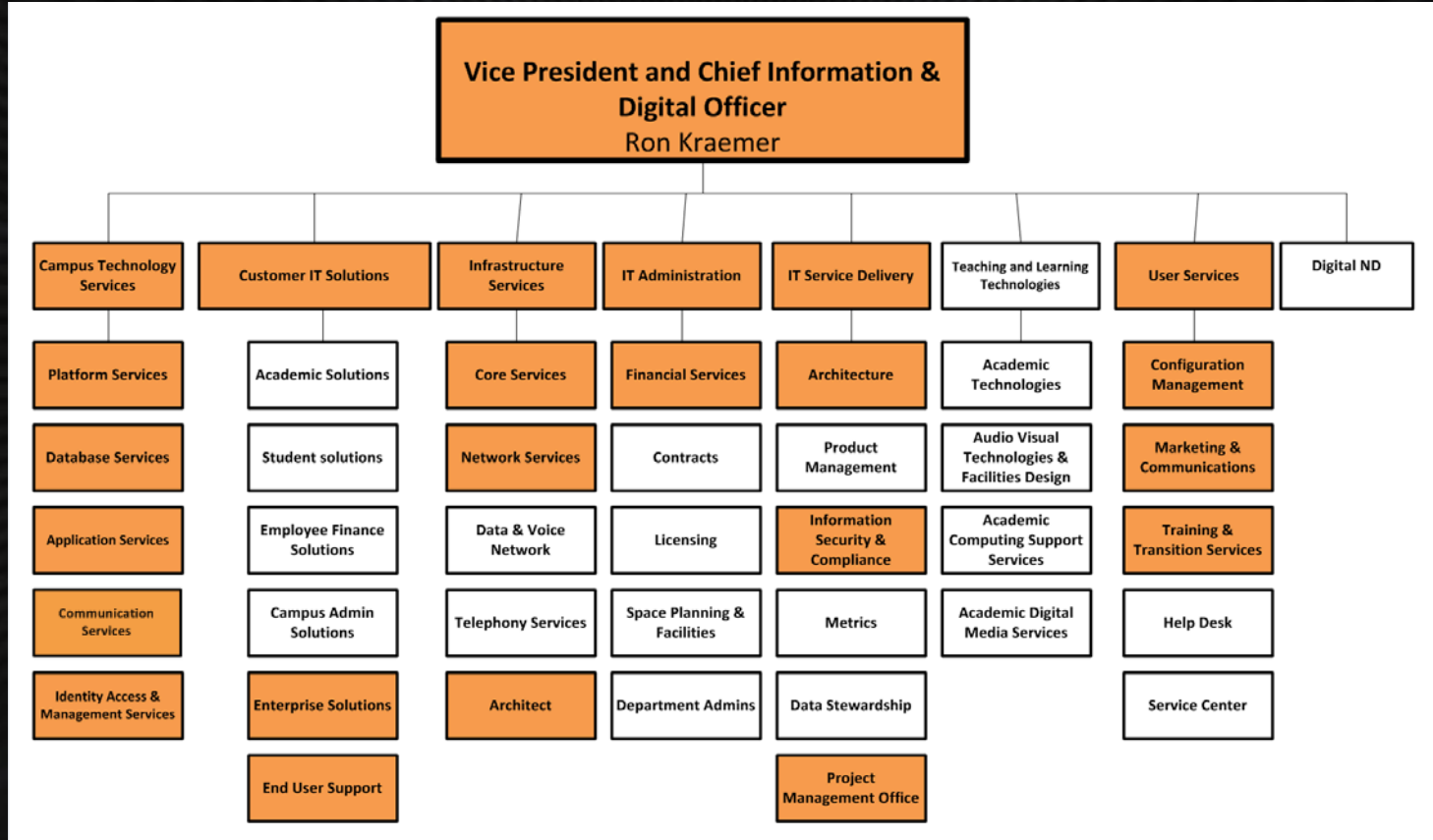
# Acceleration



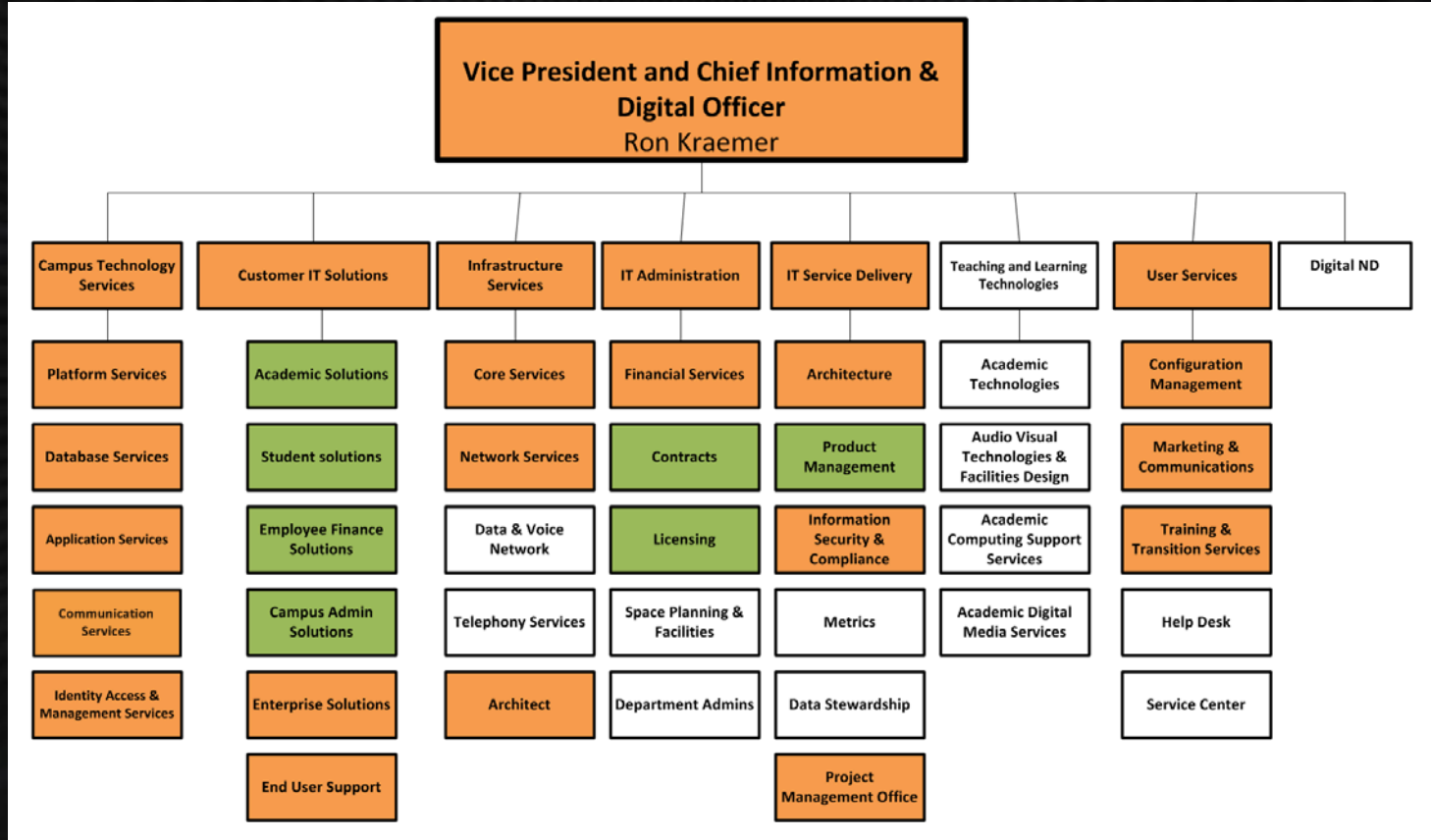
# Dedicated Team



# Dedicated Team

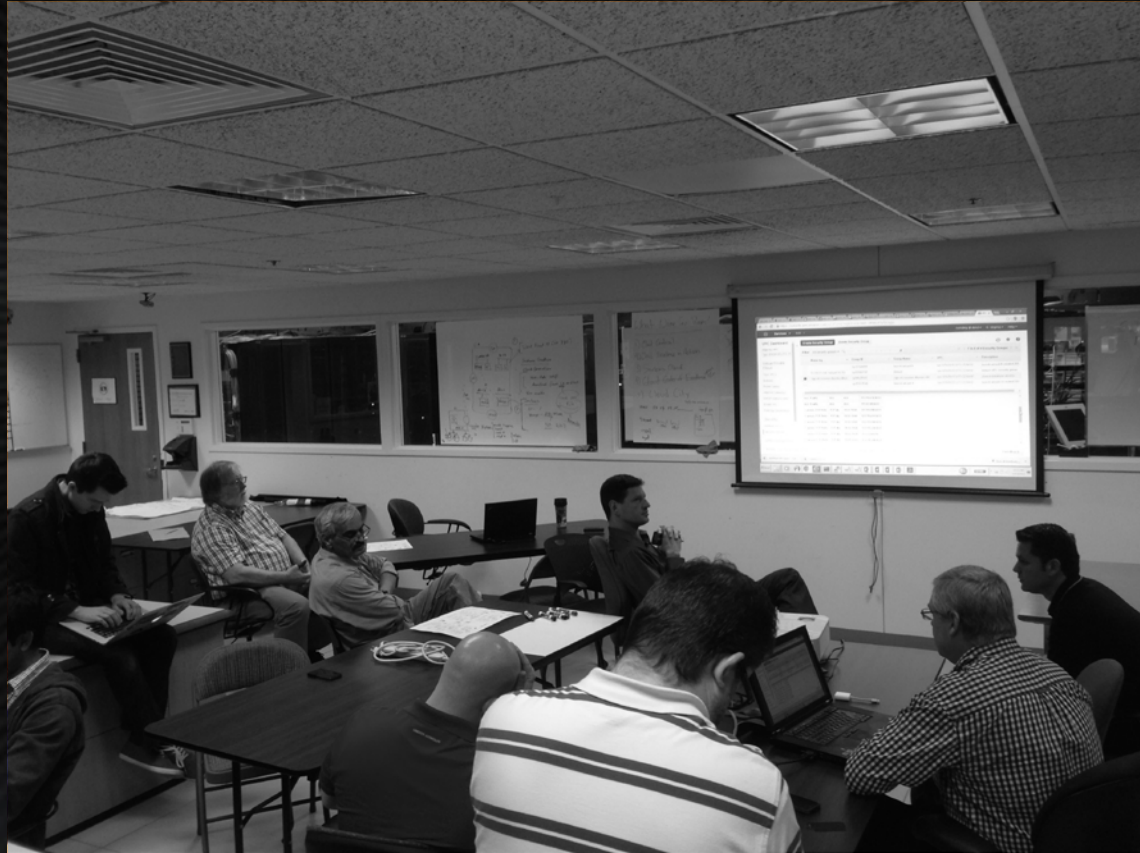


# Augmented Team





# Dedicated Space



Shared Mission: #NDCloudFirst

80% of IT service  
portfolio to be cloud  
based in 3 years

# The To Do List

- ☑ Win hearts and minds
- ☑ Build out infrastructure foundation
- ☑ Develop a migration plan
  - 100% confident in core technology
  - Embed within upgrade cycles
- ☐ Recast, replace, or reinvent
  - Data center policies and procedures
  - RDS and DBAs
  - Separation of duties
  - Audit and Security

# Things to Think About

- Network Strategy
- Troubleshooting
- Latency – what region? Are apps sensitive?
- Flip services during transition
- Customer Gateways, VPN Tunnels
  - Routing public and private addresses
  - What goes over tunnel versus Internet
  - Sizing on-premises equipment to support VPN tunnels
- Incident Response and Forensics



us-east-1a

us-east-1b

us-east-1c

us-east-1d

AZ Legend

AWS

VPC

Independent Application  
172.22.24.0/22

App IAM-1a  
172.22.24.0/25  
AZ



IGW

DB IAM-1d  
172.22.26.128/26  
AZ



IGW

DB IAM-1a  
172.22.26.0/26  
AZ



IGW

DB IAM-1b  
172.22.26.64/26  
AZ

Notre Dame VPC Structure

VPC

Independent Account  
172.22.0.0/24

App CSR-1a  
172.22.0.0/27  
AZ



IGW

DB CSR-1d  
172.22.0.192/27  
AZ



IGW

DB CSR-1a  
172.22.0.128/27  
AZ



IGW

DB CSR-1b  
172.22.0.160/27  
AZ



VPC peering

VPC

Consolidated Applications  
172.22.48.0/20

World-1b  
172.22.48.0/23  
AZ



IGW

World-1c  
172.22.50.0/23  
AZ



IGW

Campus-1b  
172.22.56.0/23  
AZ



IGW

Campus-1c  
172.22.58.0/23  
AZ



IGW

Core-1b  
172.22.52.0/25  
AZ



IGW

Core-1c  
172.22.52.128/25  
AZ



IGW

Core-1d  
172.22.60.0/25  
AZ



IGW



VPC peering



VPC peering



VPC peering

VPC

Shared Services  
172.22.32.0/20

Public SS-1c  
172.22.32.0/23  
AZ



IGW

Private SS-1c  
172.22.40.0/23  
AZ



IGW

Private SS-1d  
172.22.42.0/23  
AZ



VPC peering

VPC

Shared Database  
172.22.64.0/22

Private SDB-1b  
172.22.64.0/24  
AZ



IGW

Private SDB-1c  
172.22.65.0/24  
AZ



IGW

Private SDB-1d  
172.22.66.0/24  
AZ



VPC peering

Campus Data Center



Customer Gateway



Customer Gateway

virtual private gateway  
Typical Connection



VPC peering



# AWS re:Invent

Please give us your feedback on this  
presentation

EDU202



Join the conversation on Twitter with **#reinvent**